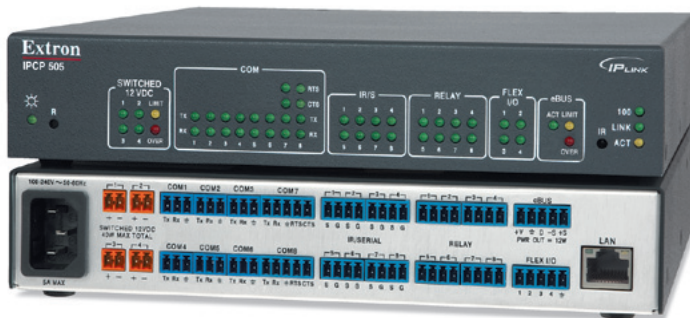


IPCP 505

IP LINK® CONTROL PROCESSOR



The Extron IPCP 505 is an IP Link® Control Processor designed to support larger configurable control systems. The IPCP 505 integrates Ethernet connectivity into AV systems, giving users the ability to remotely control, monitor, and troubleshoot AV equipment, including display devices and switchers. With a high performance embedded Web server, multiple bidirectional serial ports and unidirectional IR/serial ports, relays, and flex I/O ports, including Ethernet and eBUS ports, this control processor is ideal for applications that require control for multiple devices within a large-scale AV system.

- ▶ Ethernet Monitoring and control
- ▶ Supports TouchLink Touchpanels
- ▶ Eight bidirectional RS-232 ports for universal control of display devices, switchers and other AV equipment
- ▶ Eight IR/Serial ports for one-way control of external devices
- ▶ Eight relays for controlling room functions
- ▶ Four Flex I/O ports for interfacing with other systems in the room
- ▶ eBUS™ Port
- ▶ Four independently switched 12VDC outputs
- ▶ Supports Ethernet-enabled devices
- ▶ Free Global Configurator, easy-to-use configuration software
- ▶ Extensive library of Extron Certified device drivers
- ▶ Integrated IR learner
- ▶ Integral high performance Web server
- ▶ Supports industry standard communications protocols
- ▶ E-mail notification enables proactive support
- ▶ Multiple levels of access with password protection
- ▶ Free GlobalViewer®, Web-based AV resource management application
- ▶ LED status indicators monitor activity of the device
- ▶ Internal real-time clock
- ▶ Reset button
- ▶ 1U, half rack width enclosure



DESCRIPTION

The **IPCP 505** is an Ethernet control processor for larger configurable control systems. It uses an existing network infrastructure to work with TouchLink™ Touchpanels and provide a full scope of A/V system control capabilities. The IPCP 505 is equipped with bidirectional serial ports, IR ports, and relays for interfacing with displays, switchers, sources, screen control, lighting systems, and more.

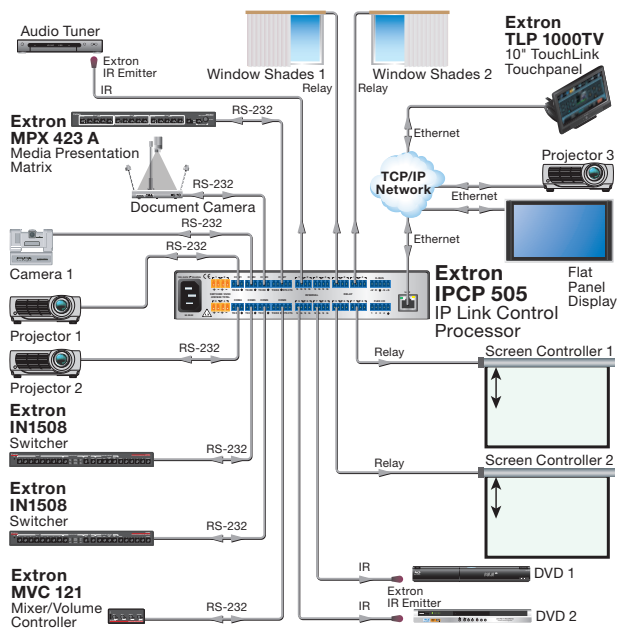
The IPCP 505 is configured using Extron's free, easy-to-use Global Configurator software. Combined with our extensive library of ready-to-use device drivers, Global Configurator's intuitive step-by-step menus allow users to configure all functions of the control system as well as create sophisticated monitoring conditions and schedules.

The IPCP 505 integrates seamlessly with Extron's award-winning GlobalViewer® Enterprise software and Free GlobalViewer® Web application for complete A/V resource monitoring, management, and control over a computer network.

KEY FEATURES

- ▶ Ethernet Monitoring and control
- ▶ Supports TouchLink Touchpanels
- ▶ Eight bidirectional RS-232 ports for universal control of display devices, switchers and other AV equipment
- ▶ Eight IR/Serial ports for one-way control of external devices
- ▶ Eight relays for controlling room functions
- ▶ Four independently switched 12 VDC outputs

APPLICATION DIAGRAM



SPECIFICATIONS

ETHERNET CONTROL INTERFACE		
Connectors	1 RJ-45 female connector	
Data rate	10/100Base-T, half/full duplex with autotdetect	
Protocols	ARP, ICMP (ping), IP, TCP, UDP, DHCP, HTTP, SMTP, Telnet	
Web server	Up to 200 simultaneous sessions 975 MB nonvolatile user memory	
Program control	Extron Global Configurator for Windows® Extron Simple Instruction Set (SIS™) Microsoft® Internet Explorer®, Telnet	
GlobalViewer requirements	Microsoft® Internet Explorer® ver. 6 or higher	
SERIAL CONTROL INTERFACE		
Quantity/type	2 bidirectional RS-232, RS-422, RS-485 6 bidirectional RS-232	
Baud rate and protocol	300 to 115200 baud (9600 baud = default); 8 (default) or 7 data bits; 1 (default) or 2 stop bits; no parity (default), or even or odd parity	
FLEX I/O CONTROL INTERFACE		
Quantity/type	4 analog input or digital input/output (configurable)	
Digital inputs	Input voltage range 0 to 24 VDC, clamped at +30 VDC	
Digital outputs	250 mA sink from 24 VDC max.	
Analog inputs	12 bit A/D, 0 to 24 VDC	
CONTROL – IR/SERIAL PORTS		
Quantity/type	8 programmable: unidirectional RS-232 (±5 V), or TTL level (0 to 5 V) infrared (carrier and non-carrier) up to 1 MHz	
IR output carrier frequency	30 kHz to 1 MHz	
RELAY CONTROL INTERFACE		
Quantity/type	8 normally open relays	
Relay control contact rating	24 V, 1 A	
SWITCHED DC POWER OUTPUT		
Quantity/type	4 switched 12 VDC outputs	
Power	Maximum 40 watts total	
GENERAL		
Power	100 VAC to 240 VAC, 50-60 Hz, 65 watts, internal	
Temperature/humidity	Storage: -40 to +158 °F (-40 to +70 °C) / 10% to 90%, noncondensing Operating: +32 to +122 °F (0 to +50 °C) / 10% to 90%, noncondensing	
Enclosure type	Metal	
Enclosure dimensions	1.7" H x 8.7" W x 10.5" D (1U high, half rack wide) (4.3 cm H x 22.1 cm W x 26.7 cm D) (Depth excludes connectors.)	
Product weight	2.5 lbs (1.1 kg)	
Regulatory compliance	Safety CE, c-UL, UL Meets UL 60950 for safety. EMI/EMC CE, C-tick, FCC Class A, ICES, VCCI Environmental Complies with the appropriate requirements of RoHS, WEEE	
Warranty	3 years parts and labor	
Model	Version Description	Part number
IPCP 505	IP Link Control Processor	60-1071-02

For complete specifications, please go to www.extron.com
Specifications are subject to change without notice.



Extron **USA - West**
Headquarters
+800.633.9876
Inside USA / Canada Only
+1.714.491.1500
+1.714.491.1517 FAX

Extron **USA - East**
+800.633.9876
Inside USA / Canada Only
+1.919.863.1794
+1.919.863.1797 FAX

Extron **Europe**
+800.3987.6673
Inside Europe Only
+31.33.453.4040
+31.33.453.4050 FAX

Extron **Middle East**
+971.4.2991800
+971.4.2991880 FAX

Extron **Asia**
+800.7339.8766
Inside Asia Only
+65.6383.4400
+65.6383.4664 FAX

Extron **Japan**
+81.3.3511.7655
+81.3.3511.7656 FAX

Extron **China**
+400.883.1568
Inside China Only
+86.21.3760.1568
+86.21.3760.1566 FAX